



Malheur National Forest

## Forest Service News Release

**Contact:** Amy Franklin (541) 620-3365

[SM.FS.malpubinfo@usda.gov](mailto:SM.FS.malpubinfo@usda.gov)

[www.fs.usda.gov/malheur](http://www.fs.usda.gov/malheur)

X: [@MalheurNF](https://twitter.com/MalheurNF)

Facebook: [www.facebook.com/MalheurNationalForest](https://www.facebook.com/MalheurNationalForest)

### Falls Fire Area Closure

**John Day and Hines, Ore. (July 10, 2024)** — The Malheur National Forest has issued an area closure for the Falls Fire on the Emigrant Creek Ranger District. To protect public health and safety, fire managers have closed the area around the fire due to fire activity and fire suppression operations. This closure will be effective July 10, 2024, through December 31, 2024, unless rescinded sooner.

#### Campground Closures:

- Emigrant Creek Campground
- Falls Campground

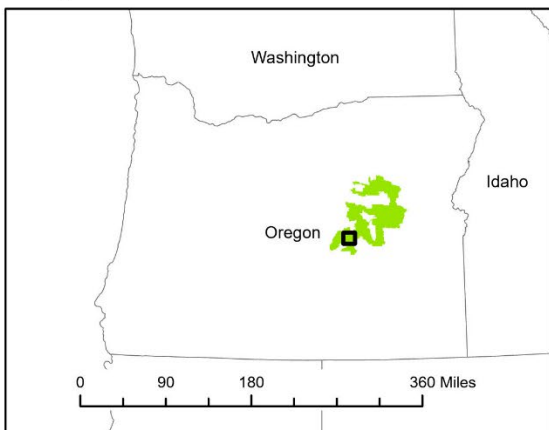
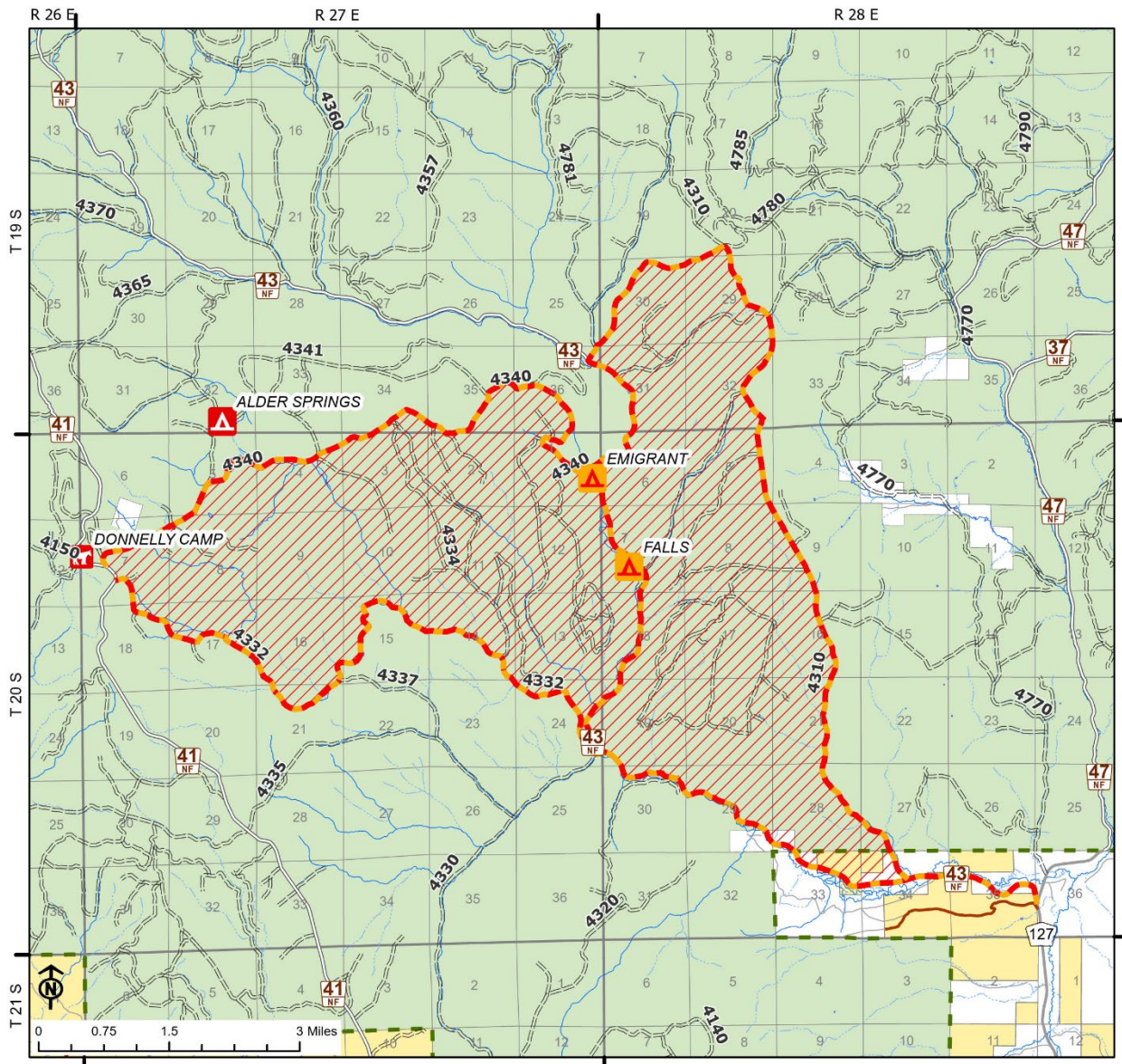
#### Road Closures:

- Forest Service Road 43 - From the junction of FS Road-47 north to the junction with FS Road-4780
- Forest Service Road 4330 – Form the junction with FS Road -43 to the junction with FS Road -4332
- Forest Service Road 4332 - From the Junction with FS Road-43 northwest to the junction with FS Road-41
- Forest Service Road 4340 - From the junction with FS Road-41 east to the junction with FS Road-43
- Forest Service Road 4780 - From the junction with FS Road-43 to the junction with FS Road-4310
- Forest Service Road 4310 - From the junction with FS Road-4780 south to the junction with FS Road-43

Forest Service Road 41 will remain open.

A detailed map of the closure is available on the Malheur National Forest website and offices.

For additional information about the Malheur National Forest, visit [www.fs.usda.gov/malheur](http://www.fs.usda.gov/malheur).



**Falls Fire Area Closure Order  
Exhibit A  
Closure Number 06-04-02-24-13  
Malheur National Forest**

- Legend
- Campground Closure
  - Road Closure
  - Area Closure
  - Campground
  - Horse Camp
  - National Forest Land
  - Bureau of Land Management
  - Other Land, Including Private



###